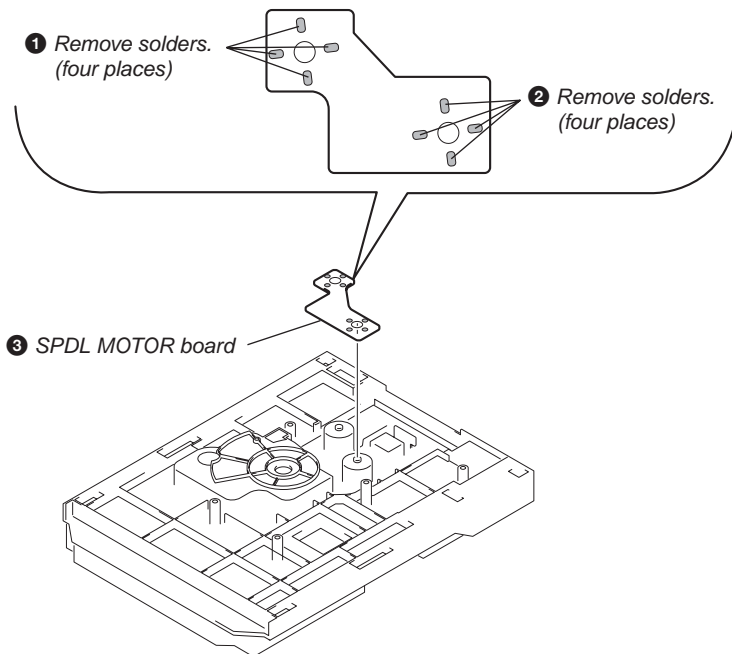
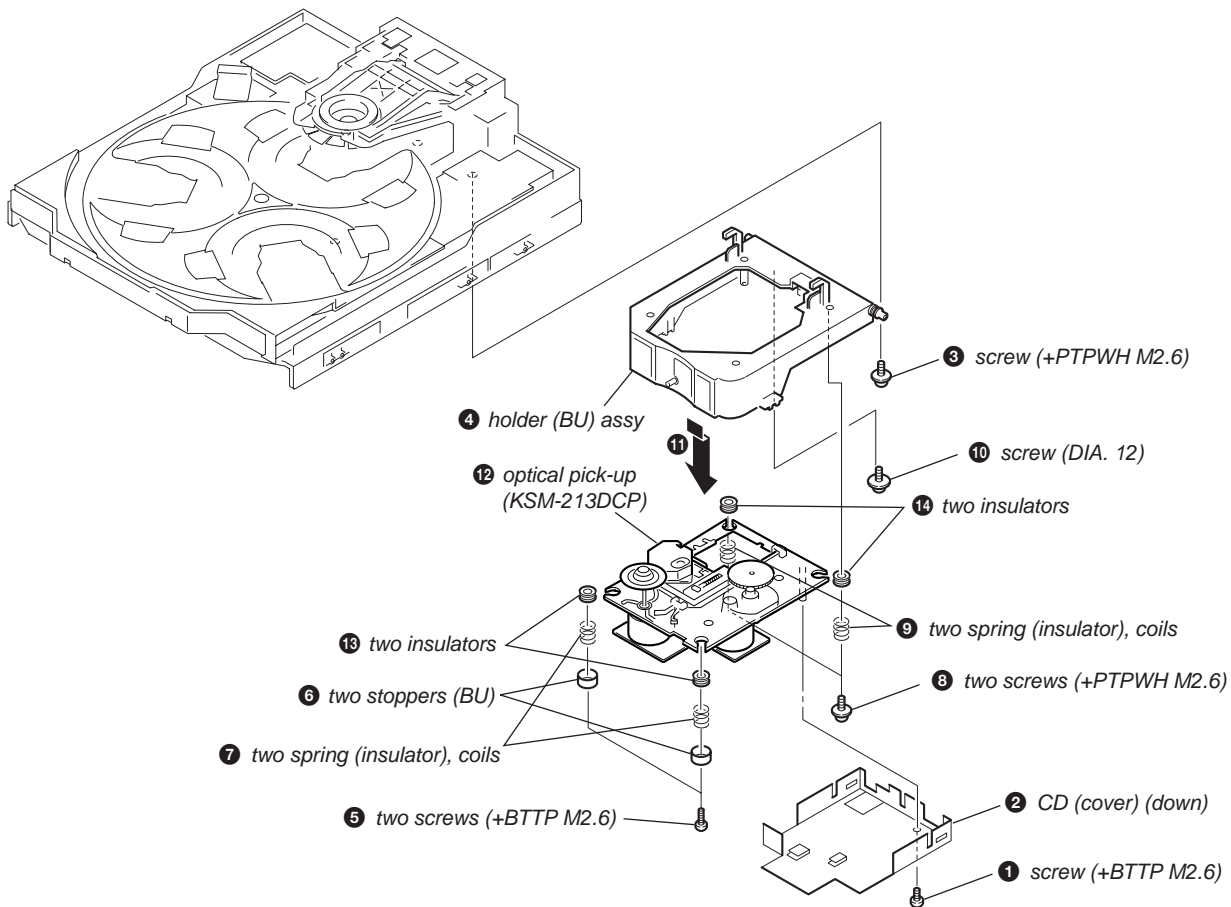


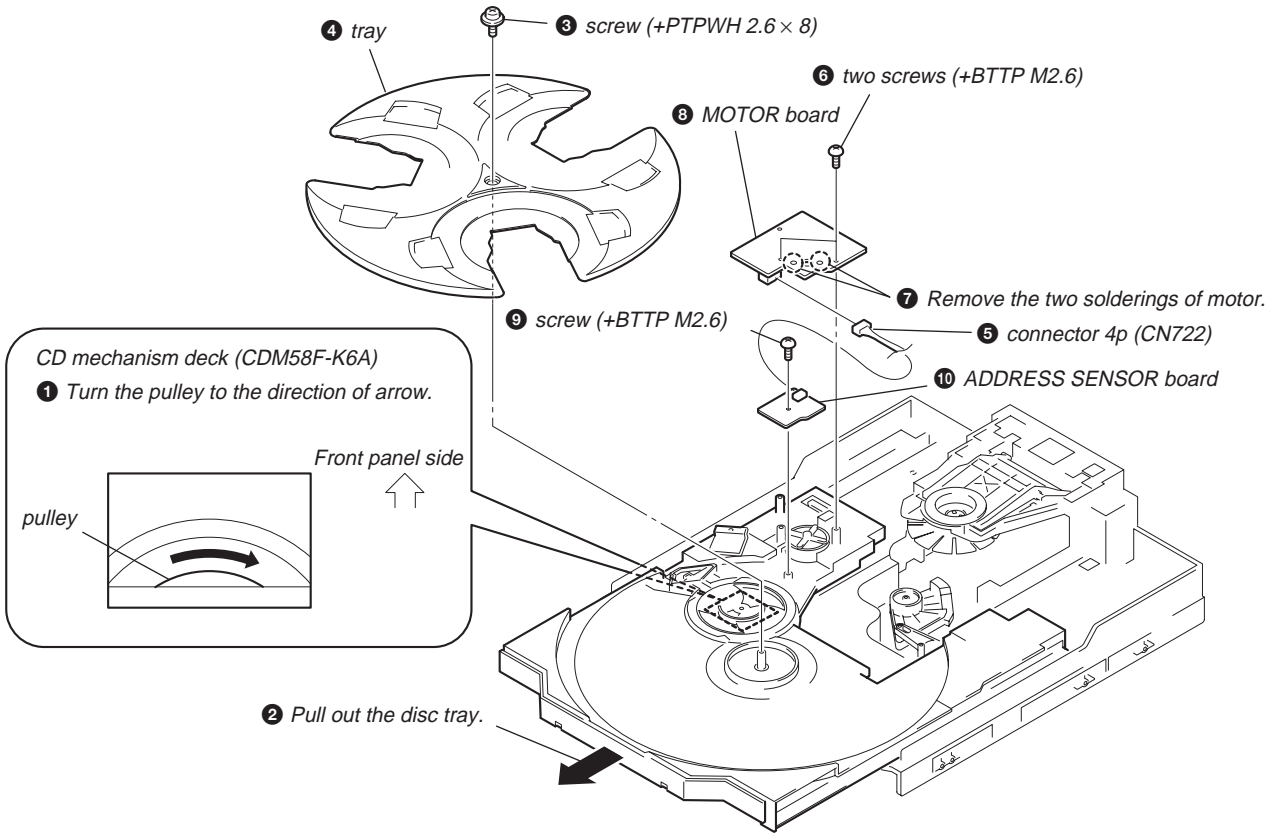
2-14. SPDL MORTR Board



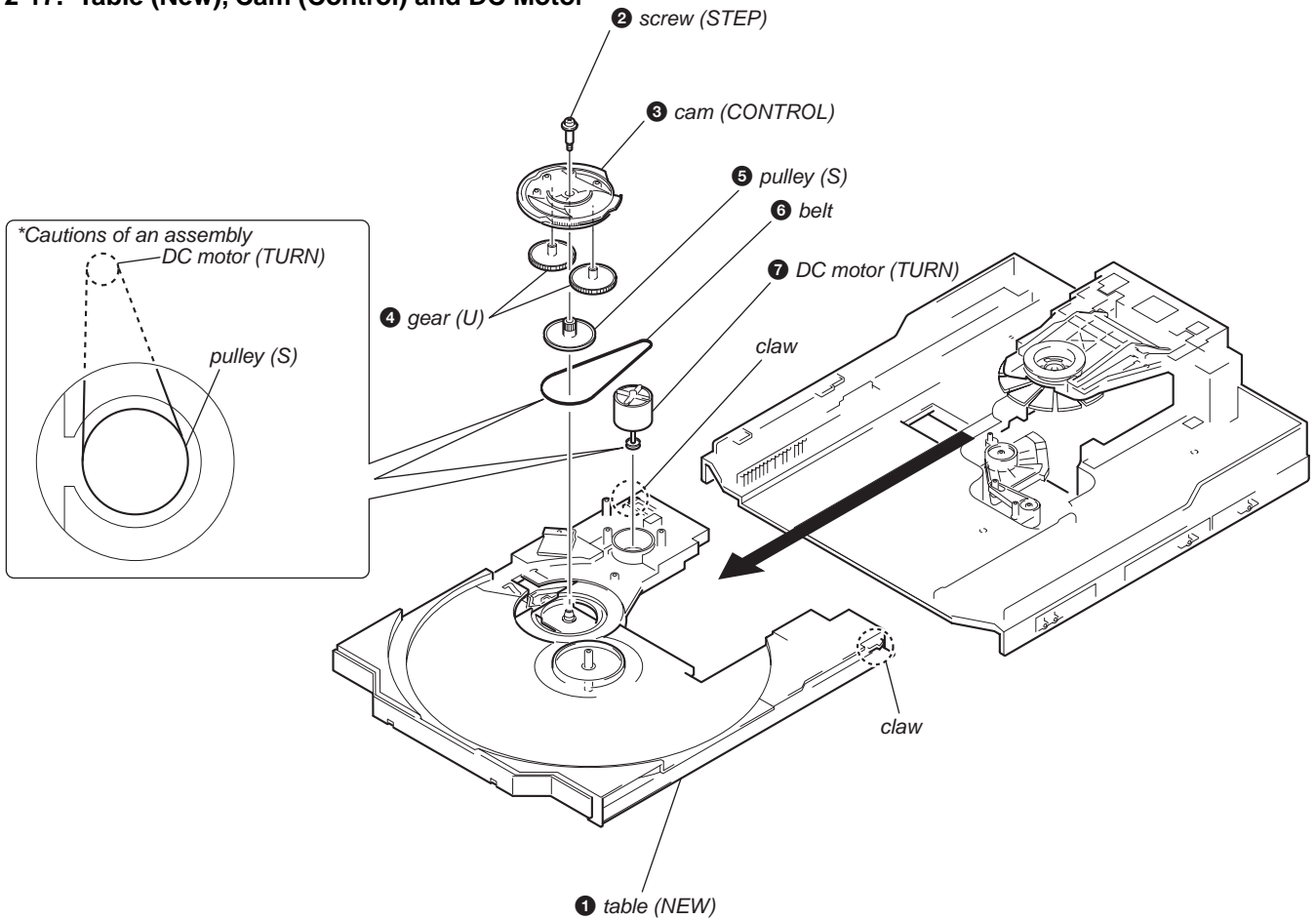
2-15. Optical Pick-up (KSM-213DCP)



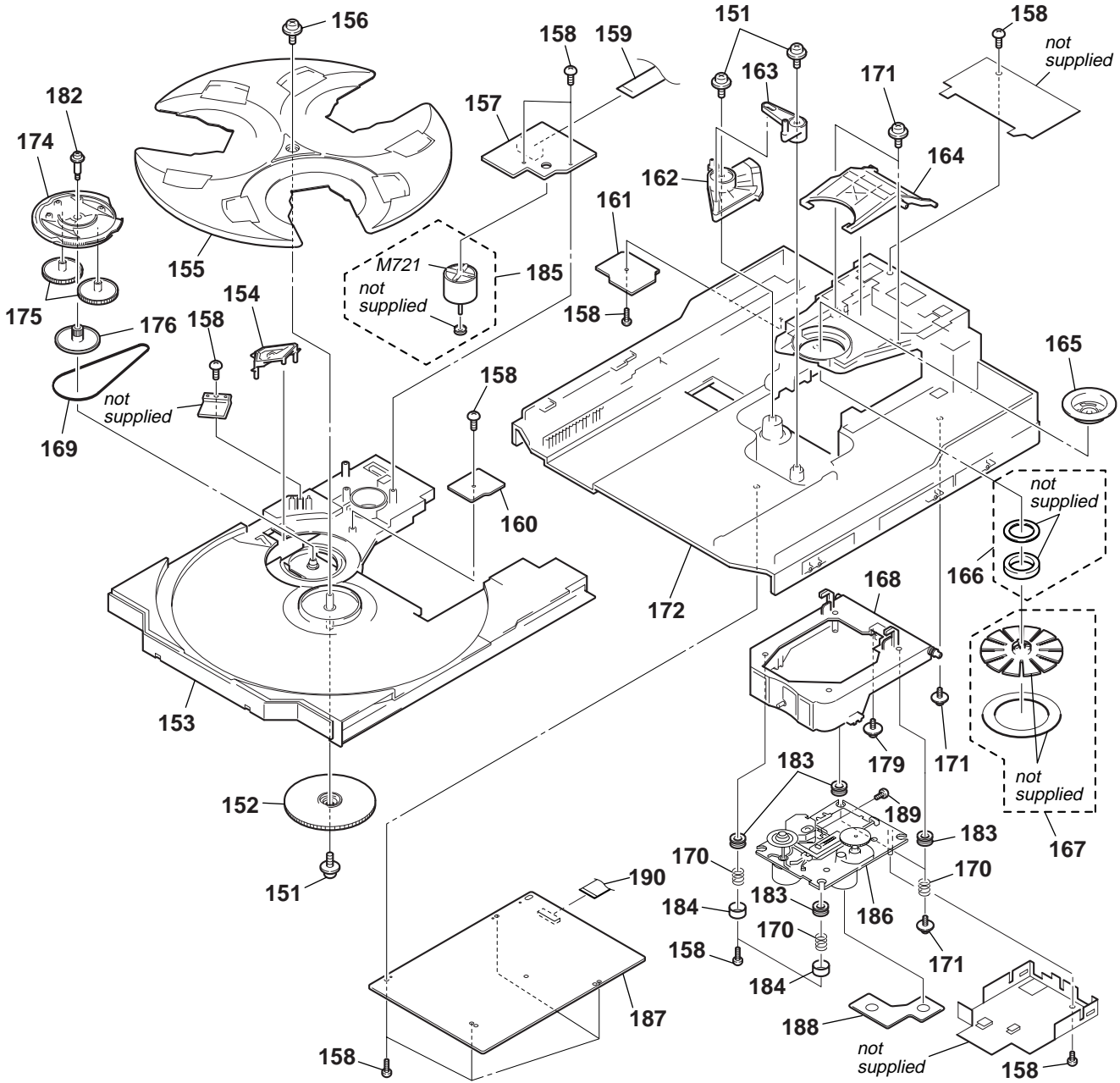
2-16. MOTOR Board, ADDRESS SENSOR Board



2-17. Table (New), Cam (Control) and DC Motor



6-4. CD Mechanism Deck Section (CDM58F-K6A)



Ref. No.	Part No.	Description	Remarks	Ref. No.	Part No.	Description	Remarks
151	4-218-254-21	SCREW (M2.6), +PTPWH		171	4-985-672-01	SCREW (+PTPWH M2.6), FLOATING	
152	4-221-679-01	CAM (RELAY)		172	4-223-777-11	CHASSIS	
153	4-231-452-03	TABLE (NEW)		174	4-221-678-01	CAM (CONTROL)	
154	4-221-686-01	LEVER (CHANGE)		175	4-221-683-01	GEAR (U)	
155	4-221-676-01	TRAY		176	4-221-685-01	PULLEY (S)	
156	4-933-134-51	SCREW (+PTPWH 2.6X8)		179	4-227-899-01	SCREW (DIA. 12), FLOATING	
157	1-675-910-14	MOTOR BOARD		182	4-222-097-01	SCREW, STEP	
158	4-218-253-01	SCREW (M2.6), +BTTP		183	4-227-549-11	INSULATOR	
159	1-791-983-12	WIRE (FLAT TYPE) (8 CORE)		184	4-231-151-01	STOPPER (BU)	
160	1-675-911-14	ADDRESS SENSOR BOARD		185	A-4672-826-A	MOTOR ASSY	
161	1-675-912-14	DRIVER BOARD		△ 186	8-820-020-02	OPTICAL PICK-UP KSM-213DCP/Z-NP	
162	X-4952-608-1	CAM (U/D) ASSY		187	A-4676-413-A	BD BOARD, COMPLETE	
163	4-221-681-01	LEVER (EX)		188	1-684-495-11	SPDL MOTOR BOARD	
164	4-221-682-01	LEVER (LIFTER)		189	4-951-620-01	SCREW (2.6X8), +BVTP	
165	4-221-688-01	PULLEY (B), CHUCKING		190	1-823-859-11	WIRE (FLAT TYPE) (16 CORE)	
166	1-471-035-11	MAGNET ASSY		M721	1-763-790-11	MOTOR, DC (TURN)	
167	X-4952-019-1	PULLEY (A) ASSY, CHUCKING					
168	X-4951-889-1	HOLDER (BU) ASSY					
169	4-222-095-01	BELT					
170	4-227-045-11	SPRING (INSULATOR), COIL					

The components identified by mark △ or dotted line with mark △ are critical for safety. Replace only with part number specified.